

Cumber Drive, Brixham, TQ5 8RW



Vacant possession! This **TWO BEDROOM LINKED BUNGALOW** has previously been a long term let, and is ready to be given a fresh start! Positioned on the ever popular Cumber Drive, within easy reach of the local shops on Pillar Avenue and a bus services passes by on Northfields Lane. Furzeham Green is a short level walk away which leads you down to Fishcombe Cove or into the town. Internally the property provides a spacious lounge dining room with large window to the sunny front garden, a compact kitchen, wet room style shower room as well as two bedrooms, one with patio doors leading out to the enclosed rear garden.

£195,000 Freehold

ENTRANCE PORCH

Space for shoes and coats. Inner door to:

LOUNGE / DINING ROOM 15' 8" x 14' 11" (4.77m x 4.54m) Spacious lounge diner with large window to front. Ample room for furniture. Night storage heater.

INNER HALL

Loft hatch. Storage cupboard.

KITCHEN 7' 7" x 6' 5" (2.31m x 1.95m)

A range of wall and base units with complimenting worktops. Stainless steel sink with drainer. Under counter cooker. Four ring electric hob. Velux window.

WET ROOM 6' 2" x 5' 0" (1.88m x 1.52m)

Low level W.C. Pedestal wash basin. Mira electric shower. Velux window. Airing cupboard.

BEDROOM 2 12' 3" x 5' 10" (3.73m x 1.78m)

Night storage heater. Window to rear.

BEDROOM 1 12' 6" x 8' 8" (3.81m x 2.64m)

Sliding patio doors to rear garden. Night storage heater. Electric wall mounted heater. Cupboard.

OUTSIDE

REAR GARDEN

Low maintenance paved garden. Beech hedge to rear. Gated access onto Cumber Close.

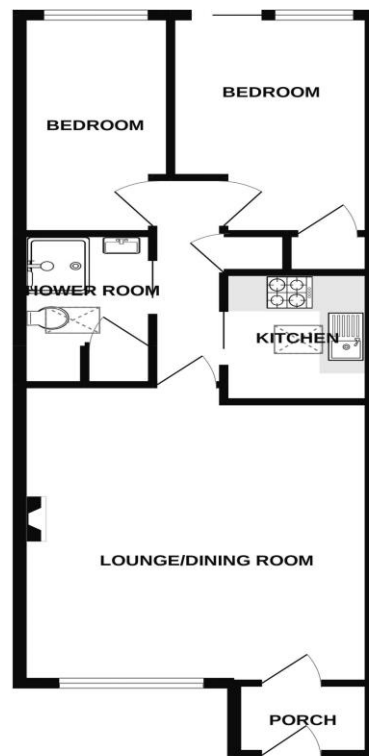
FRONT GARDEN

Driveway parking. Border flower beds. External storage cupboard with electric consumer unit.

ENERGY PERFORMANCE RATING: D

COUNCIL TAX BAND: B

GROUND FLOOR
53.5 sq.m. (575 sq.ft.) approx.



LAYOUT GUIDE ONLY – NOT TO SCALE

The appliances and fixed equipment mentioned in these sales particulars have not been tested by Eric Lloyd & Co. (Churston) Ltd. and therefore prospective purchasers need to satisfy themselves that all such items are in working order.

We may receive an introductory fee on recommendations for professional services.

Ref B001483 Written by: Mike Williams